

About the F-9

The **F-9 Wimberley Head Version II Flash Bracket™** is one of several flash bracket combinations that can be assembled with the components of the Wimberley Modular Flash Bracket System. The Wimberley Modular Flash Bracket System brings a new level of versatility and portability to the world of flash brackets.

The F-9 is a telephoto bracket that allows you to use an off-camera flash unit attached to the Wimberley Head Version II swing arm. **This bracket requires the use of an off-camera shoe cord or wireless adapter recommended by your camera manufacturer (not available through Wimberley).**

It is important to read these instructions and to spend some time getting familiar with the modular parts and how they fit together. Once you become familiar with the Modules in the Flash Bracket System, you may well find new and unique configurations and applications for them.

The standard F-9 Wimberley Head Version II Bracket consists of two modules: the Tilt Arm (M-3) and the Wimberley Head Version II Module (M-9). The Modular Flash Bracket System design allows you to easily disassemble brackets for convenient storage.

Dimensions (Overall L x W x H): 5.5" x 1.0" x 8.5"

Weight: 6.5 oz.

Materials: Anodized 6061 Aluminum, stainless steel fasteners

Instructions

Connecting Flash Bracket Modules:

(The figure below shows the connection between M-9 and M-3; the same principle applies for other connections.)

1. **Unscrew the 5-lobe knob on the M-3 Module until it reaches the end of its range** (exposing about 3/8" of the threaded stud on which the knob rides). Do not force the knob past the point of resistance. This knob is captive and should not come off.
2. **Slip the forked end of the M-9 Module over the exposed threads.**
3. **Seat the M-9 Module** by slipping one of the enlarged areas in the slot over the cylindrical nub at the base of the exposed threads on the M-1.
4. **Tighten the 5-lobe knob securely.**

Wimberley

F-9

Wimberley Head Version II &
Sidemount Wimberley Flash Bracket



Package Contents:

- **M-3 Module:** Tilt Arm (Qty 1)
- **M-9 Module:** Wimberley Head V2 Upright and Quick-release (Qty 1)

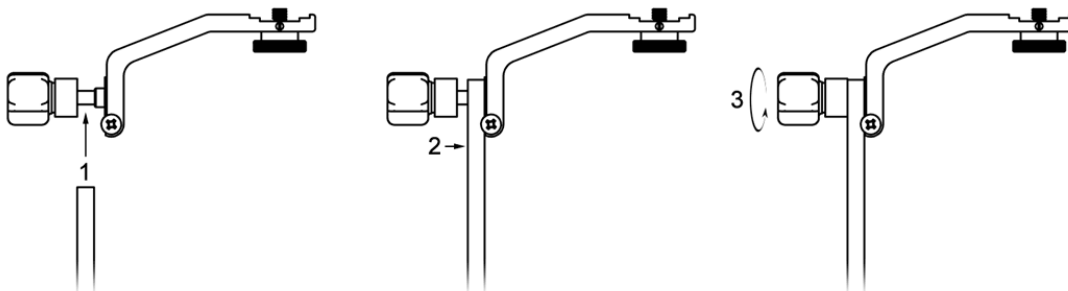
Wimberley, Inc.
1750 Broadway St
Charlottesville, VA
22902 USA

Phone: 1-434-529-8385

Toll Free: 1-888-665-2746 (USA & Canada)

www.tripodhead.com info@tripodhead.com

5 Year Warranty – See www.tripodhead.com/warranty.cfm for complete details



Instructions continued >>

Attaching the F-9 Bracket to the Wimberley Head Version II:

The F-9 bracket is designed to attach to the swing arm of the Wimberley Head Version II™ (WH-200). It is a beneficial telephoto bracket to use with the WH-200 because mounting it will not affect the balance point of your lens. If you were using the F-1 Telephoto bracket, you would need to rebalance the lens once the bracket was attached to the lens plate. The F-9 bracket also stays on the Head when swapping out lenses, which can be very handy in the field.

NOTE: The F-9 will not fit the swing arm of the vintage Wimberley Heads (WH-100/101) because the swing arm of the original Wimberley Head is not narrow enough to fit within the clamping jaw of the M-9 Module (the WH-100 and 101 Head swing arms do not have machined, Arca-Swiss style grooves to which the bracket can be connected).

The M-9 module has an innovative pivoting, low-profile quick-release clamp, which eliminates loose screws and the need for tools (*Fig. 1*). The pivoting jaw allows for flexibility in positioning of the bracket on the Head.

The swing arm of the WH-200 has an Arca-Swiss style, double dovetail along each side of its length, and it is to this that the F-9 bracket attaches.

TIP: It makes it easier to mount the bracket if the swing arm of the Head is tightened down first.

1. Using the bottom knob on the M-9 quick-release, open the M-9 module jaws until you meet some resistance. The knob is captive and should not come off.
2. Pivot the moving jaw with the knob to either side, perpendicular to the upright portion of the M-9 module (*Fig. 2*).
3. Place the bracket above the swing arm. Choose the configuration that feels best to you and allows you to comfortably access the focusing ring on your lens (*Fig. 2, Option 1 & 2*).
4. Adjust the width of the clamp jaws so that they are a just bit wider than the width of the swing arm grooves. Make sure that the bracket jaws are completely parallel with the dovetail groove on the swing arm.
5. Slide the bracket down the swing arm from the top. Position it above the lens mounting platform.
6. Once the bracket is in a good position, turn the M-9 screw knob to tighten the clamp jaws and secure the bracket on the swing arm.
7. Adjust the bracket height as desired by loosening the M-9 knob slightly. Re-tighten after any up or down adjustment is made.

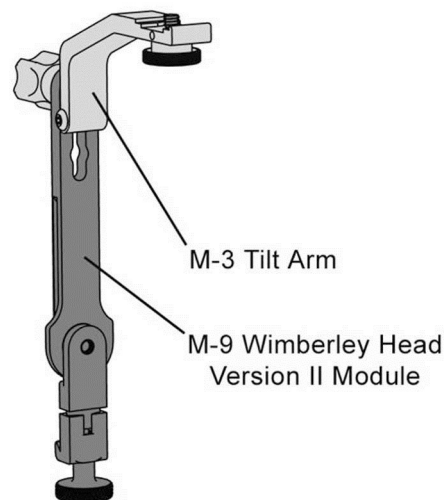


Figure 1

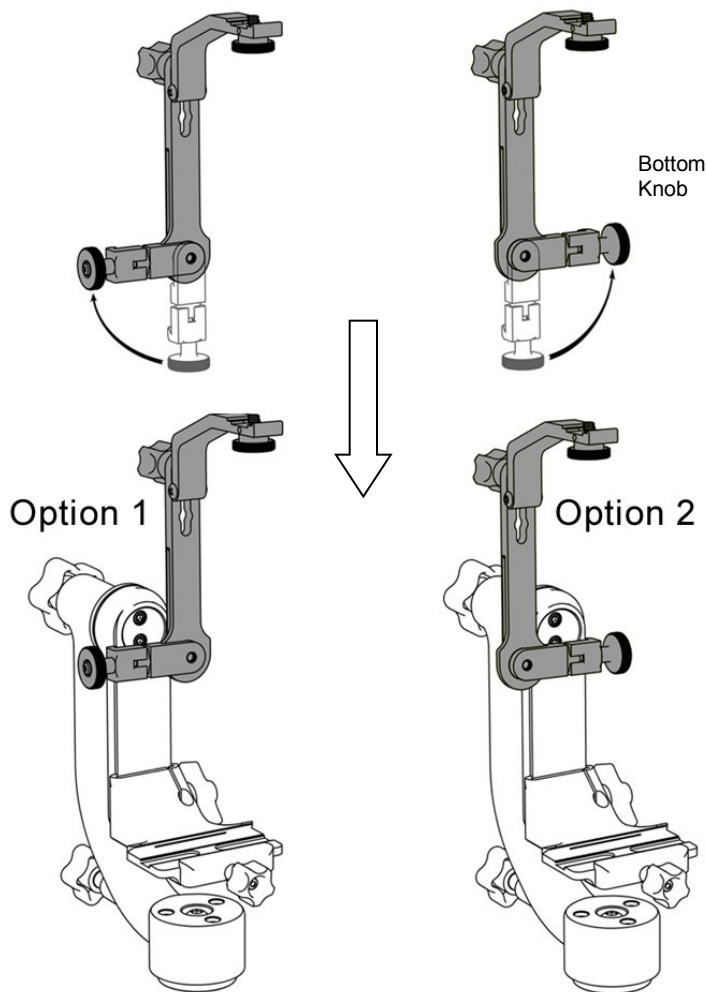


Figure 2

Attaching your Flash Unit:

Wimberley Flash brackets are designed to screw into the 1/4" threaded hole found on the bottom of an off-camera shoe adapter (usually on one end of a flash cord cable) that connects the camera to the flash. **To attach your flash unit, you will need a flash cord or wireless flash adapter (Fig. 3).** The flash cord (or wireless adapter) connects the electrical signal from the hot shoe on your camera body to the flash unit allowing it to fire properly. We recommend purchasing an adapter that is recommended by your camera manufacturer so it will be compatible with both your flash unit and your camera body. Wimberley does not sell flash cords. We recommend that you contact your local camera shop for in-depth guidance.

The flash cord has one end that slides into the camera's flash hot shoe, and another end that slides onto the bottom of the flash unit. Attach the flash cord to the top of the flash bracket using the silver, captive knurled fastener on the M-3 Tilt Arm. **To remove the flash, be sure to lift up lightly on the flash unit while unscrewing the knurled knob. This will prevent the fastener from unscrewing from the flash bracket and possibly jamming.**



Figure 3

Flash Cord Compatibility Notes: **Nikon Users:** the Nikon SC-29 cord requires the use our FA-11 Flash Cord Adapter (Fig. 4) to attach the cord snugly to the bracket. **Canon users:** some older Canon off-camera flash cords have a mounting foot that is slightly too wide to fit properly in the slot on the flash arm. The off-camera adapter has a square footprint. If one of the sides of the flash adapter square has a lump on it, remove material *from the side of the square opposite this lump* with a file until it fits into the groove on the M-3. We apologize for this dimensional incompatibility. We made this design sacrifice so that the bracket would fit newer Canon cords snugly.

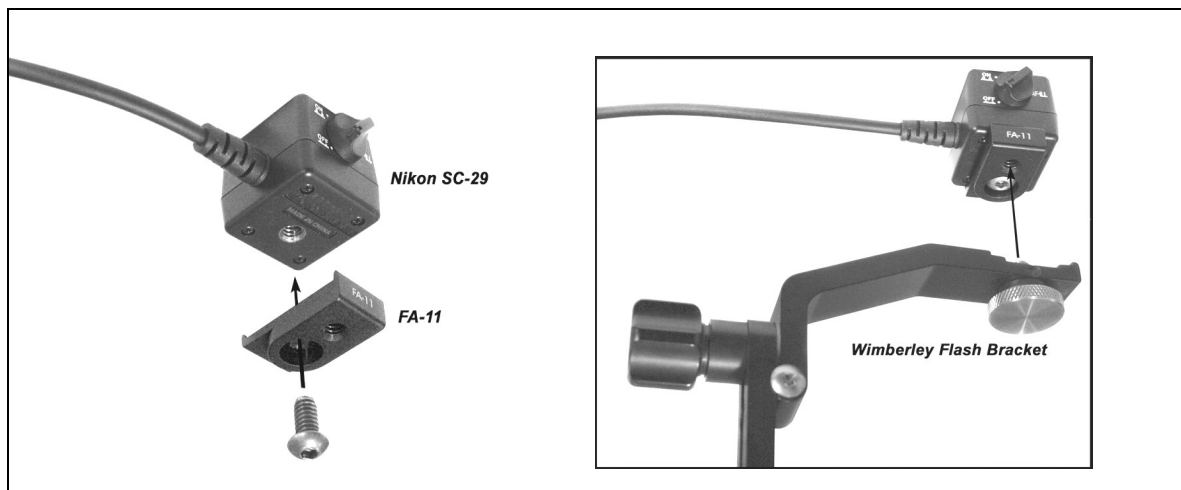


Figure 4

Positioning your Flash:

The Modular Flash Bracket System design allows you to easily disassemble brackets for convenient storage. It also allows you to adjust the size of the bracket to fit different sized lenses. The M-3 Tilt Arm module can be adjusted in the keyed slots of the M-9 Module to increase or decrease the height of the flash unit. Adjust the vertical position of the Tilt Arm on the M-9 for telephoto lenses of different sizes. Flip the Tilt Arm upside down to lower the flash even further (if you do this, you must remove the silver thumbscrew that holds the flash in place and reinstall it from the opposite side).

You can also attach the Tilt Arm so that it positions the flash off-center. The Tilt Arm is fitted with two stop screws that keep the flash from tilting forward or backward (*Fig. 5*). If you wish to tilt the flash forward, simply unscrew the appropriate screw enough to give you the desired amount of forward rotation. If you are using a collared macro lens, flip the Tilt Arm upside-down. In this orientation, the stop screws do not engage, and the arm is completely free to tilt forward and backward.

Side-mount Configuration:

The F-9 bracket can also be used on side-mount heads such as the Wimberley Sidekick.

Swivel the quick-release arm on the bottom of the bracket to the straight position and attach the bracket to the dovetail on your lens plate.

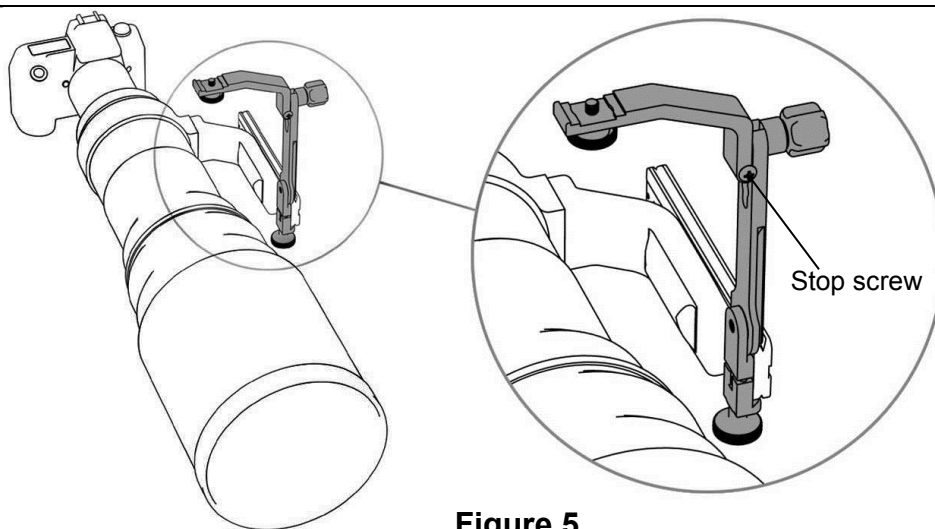


Figure 5

Other Uses & Add-ons:

1. Add the Wimberley M-4 Macro Arm Module™ by attaching it to, or substituting it for, the M-3 Tilt Arm. This allows you to add more flash positioning versatility to your telephoto photography (*Fig. 6*).
2. You can also make a Macro Bracket by removing the M-3 Tilt Arm and adding the M-4 Macro Arm to the M-9 quick-release module (*Fig. 7*). *Note: the quick-release knob on the M-9 is larger than that of the M-1; this may cause clearance issues in certain configurations.*

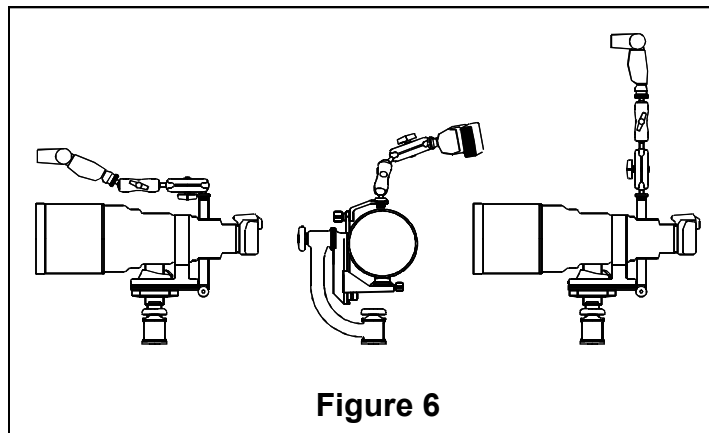


Figure 6

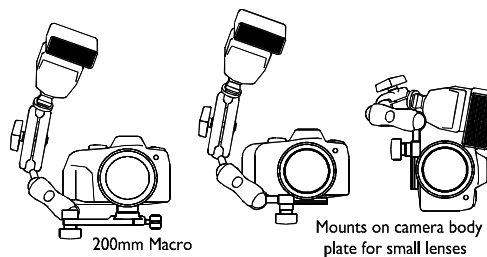


Figure 7 (M-1 shown, M-9 will work too)

3. **The Wimberley M-6 Extension Post Module™** is a simple post that allows you to extend the height of your flash. The M-6 Module attaches to the vertical arm of your flash bracket using the same captive fastener system found on several other modules in the system. The M-6 gives you up to 5" of extension to help you reduce red eye or "steel eye" in your subjects. It can also help you elevate and extend a flash unit outside a window or blind. If you desire more extension, you can stack extension posts to get the height you need, and pairs fit together for compact storage.

Thank you for your interest in Wimberley products. If you have any questions or comments please feel free to contact us (our contact information is located in the black box on the first page).